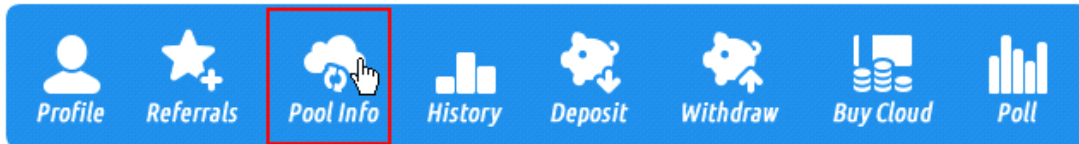




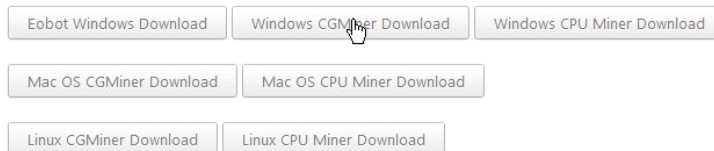
## TUTORIAL SIMPLE CGMINER

### **PASO UNO:**



Ir a la seccion "pool info"

### **PASO DOS:**



Contact [support](#) if we need to permanently lock your WorkerID (it locks if speed greater than zero).

#### **SHA-256 Pool Info:**

Server: stratum+tcp://stratum.btcguild.com:3333  
Username: ecraigfields21\_380 Password: x

#### **Scrypt Pool Info:**

Server: stratum+tcp://192.99.18.63:3333  
Username: eobot\_380 Password: x

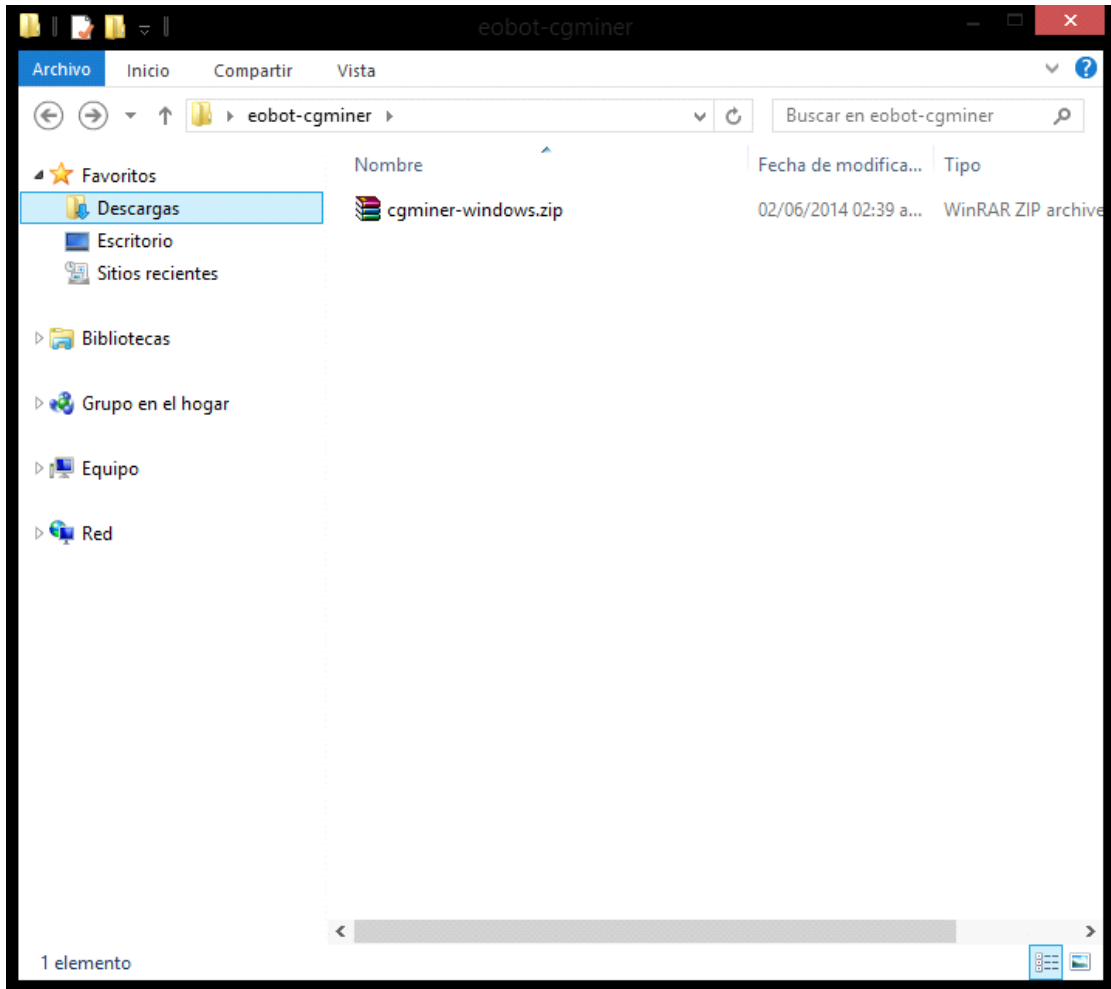
#### **Your Unique Run Commands:**

```
cgminer.exe --scrypt -o stratum+tcp://192.99.18.63:3333 --userpass eobot_380:x  
miner.exe -a scrypt -o stratum+tcp://192.99.18.63:3333 --userpass eobot_380:x
```

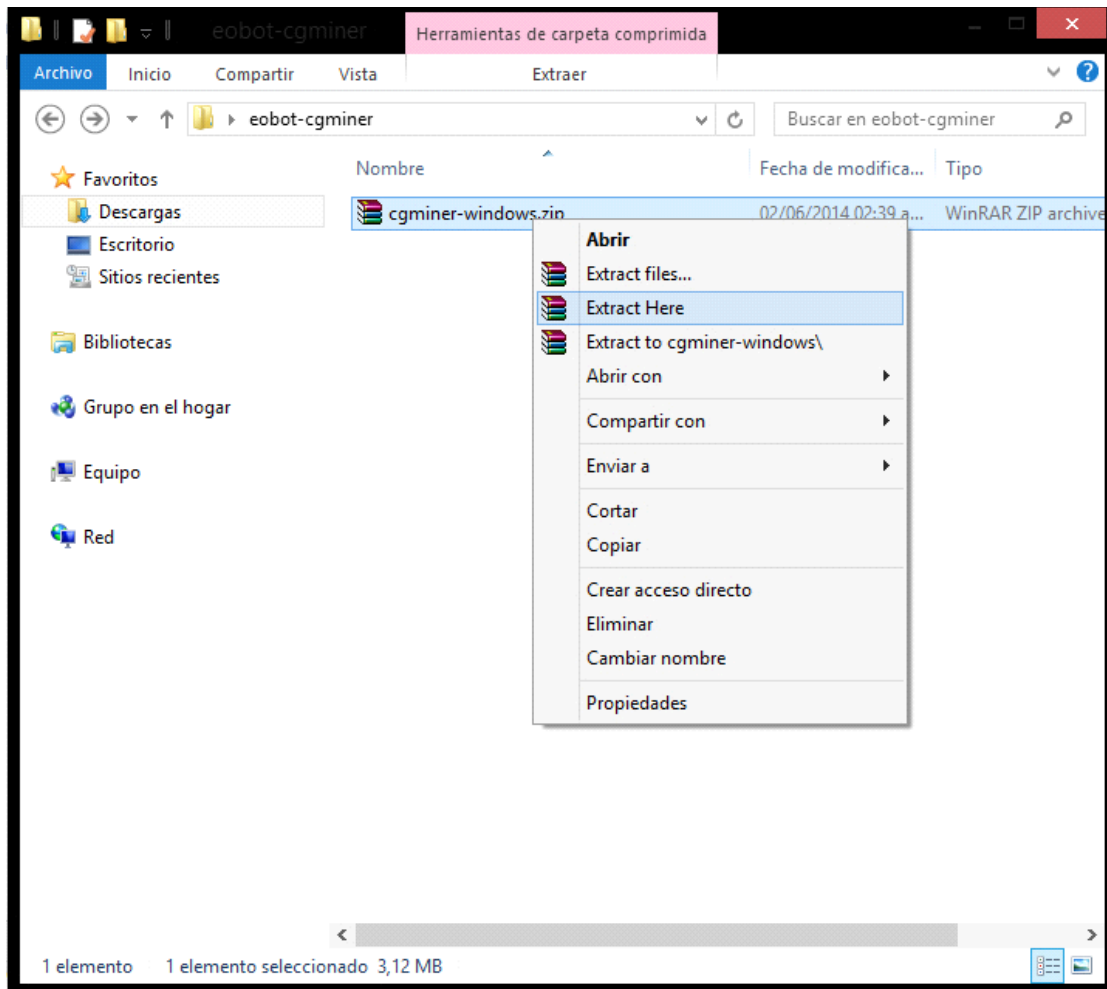
Important to increase speed: The default cgminer settings does not include hardware specific flags, which you may find here in the [Bitcoin Mining Hardware Comparison](#). Failing to use the proper flags can result in performance decreases in excess of 50%.

DESCARGAR CGMINER WINDOWS (o la version de su sistema operativo)

### **PASO TRES:**

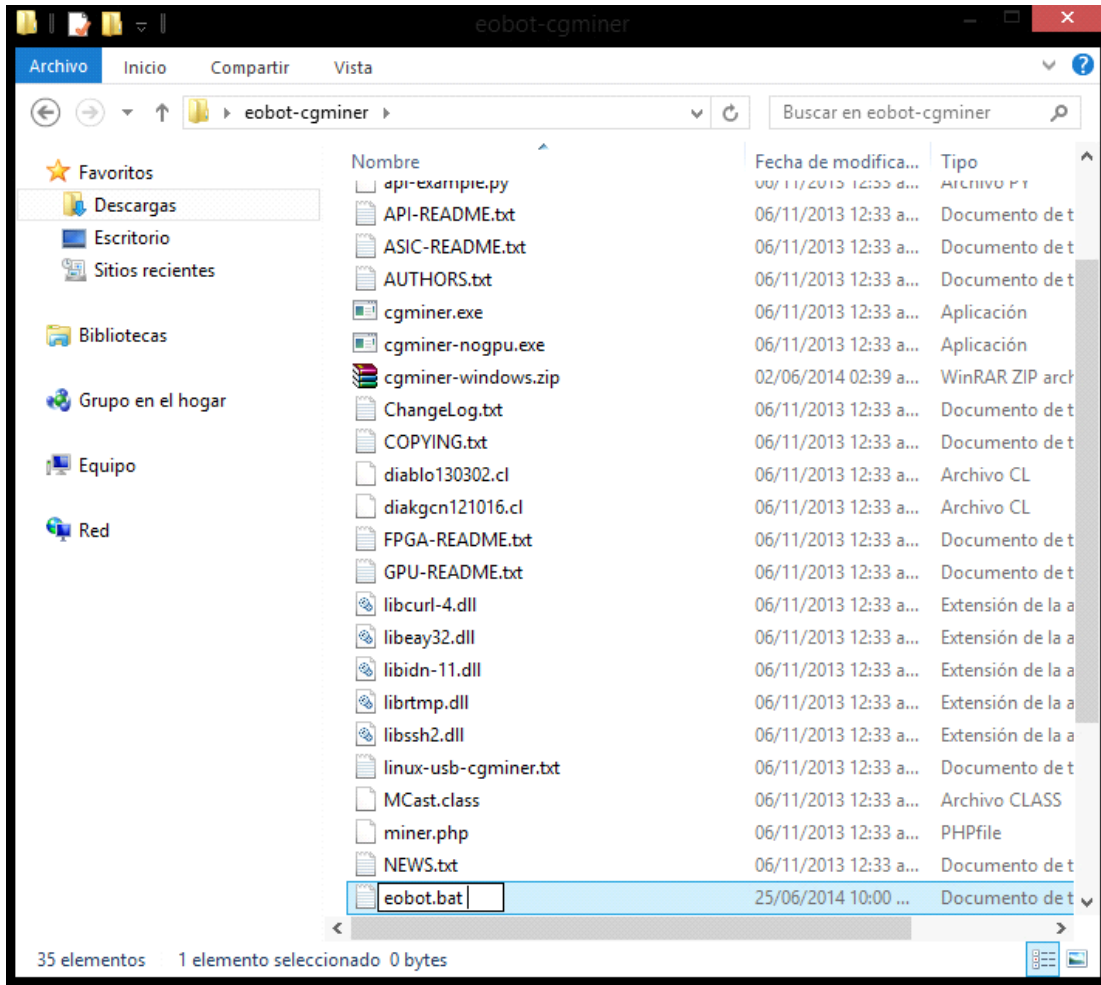


GUARDAR Y EXTRAER EN LA MISMA CARPETA



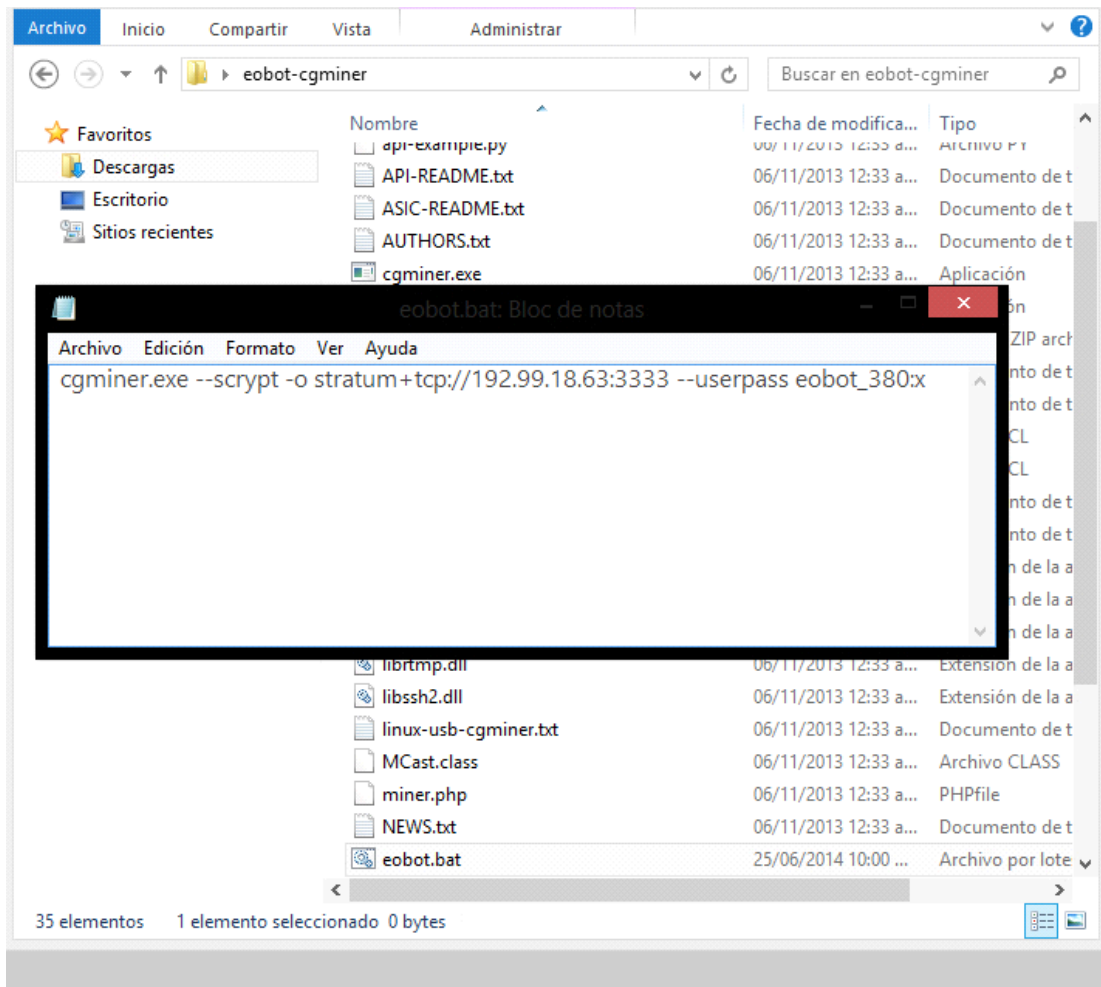
#### **PASO CUATRO**

CREAR UN NUEVO DOCUMENTO DE TEXTO Y RENOMBRARLO A "eobot.bat" (sin las comillas)



## **PASO CINCO**

EDITAR EL ARCHIVO "eobot.bat" Y COMPLETARLO CON LA INFO QUE APARECE EN LA SECCION "pool info" que contiene sus datos (Para saber cuales son sus datos lea el titulo "Your unique run commands" y copielos) luego guarde el archivo



## **ULTIMO PASO**

Hacer doble click en el archivo "eobot.bat" , esperar uno segundos a que aparezca una pantalla como la q esta a continuacion....

```
C:\Windows\system32\cmd.exe
sgminer 4.2.1 - Started: [2014-06-25 18:51:38] - [0 days 03:13:58]
-----
(S5):96.75K (avg):96.70Kh/s | A:16464 R:64 HM:0 MU:85.802/m
SI: 0 SS: 7 MB: 384 LW: 18124 GF: 1 RF: 0
Connected to 192.99.18.63 (stratum) diff 16 as user eobot_380
Block: 1d900944... Diff:819M Started: [22:04:49] Best share: 5.24K
-----
[P]ool management [G]PU management [S]ettings [D]isplay options [Q]uit
CPU 0: 59.0C 100% | 96.24K/96.70Kh/s | R: 0.4% HM:0 MU:85.802/m I:13
-----
[21:59:13] Accepted 8948bf1c Diff: 25/16 GPU 0
[21:59:23] Accepted 020443e8 Diff: 126/16 GPU 0
[21:59:33] Accepted 07f64601 Diff: 32/16 GPU 0
[21:59:43] Accepted 022581bf Diff: 119/16 GPU 0
[21:59:53] Accepted 8e196484 Diff: 21/16 GPU 0
[22:00:03] Accepted 83a48ce6 Diff: 78/16 GPU 0
[22:00:13] Accepted 07f7d34c Diff: 32/16 GPU 0
[22:00:23] Accepted 0922e200 Diff: 28/16 GPU 0
[22:00:33] Accepted 8e55f146 Diff: 17/16 GPU 0
[22:00:43] Accepted 899ec9db Diff: 33/16 GPU 0
[22:00:53] Accepted 09abe693 Diff: 25/16 GPU 0
[22:01:03] Accepted 0eb08b35 Diff: 17/16 GPU 0
[22:01:13] Accepted 8be374d8 Diff: 21/16 GPU 0
[22:01:23] Accepted 84f4bf10 Diff: 51/16 GPU 0
[22:01:33] Accepted 0f74b677 Diff: 16/16 GPU 0
[22:01:43] Accepted 06301912 Diff: 21/16 GPU 0
[22:01:53] Accepted 89cf246b Diff: 26/16 GPU 0
[22:02:03] Accepted 0c54f4a4 Diff: 28/16 GPU 0
[22:02:13] Accepted 045de73f Diff: 58/16 GPU 0
[22:02:23] Accepted 065c6ala Diff: 40/16 GPU 0
[22:02:33] Accepted 8befe160 Diff: 21/16 GPU 0
[22:02:43] Accepted 0b8dadcd Diff: 23/16 GPU 0
[22:02:53] Accepted 0933957b Diff: 27/16 GPU 0
[22:03:03] 192.99.18.63 stale share detected, discarding
[22:03:11] Accepted 073a0c03 Diff: 35/16 GPU 0
```

... felicitaciones.. ya estas minando!