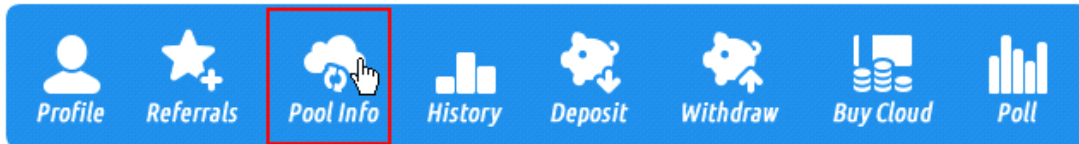




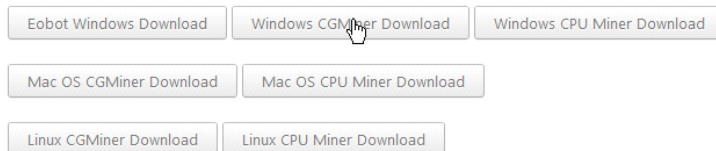
SIMPLE CGMINER TUTORIAL

Step One:



Go to "pool info" section

Step Two:



Contact [support](#) if we need to permanently lock your WorkerID (it locks if speed greater than zero).

SHA-256 Pool Info:

Server: stratum+tcp://stratum.btcguild.com:3333
Username: ecraigfields21_380 Password: x

Script Pool Info:

Server: stratum+tcp://192.99.18.63:3333
Username: eobot_380 Password: x

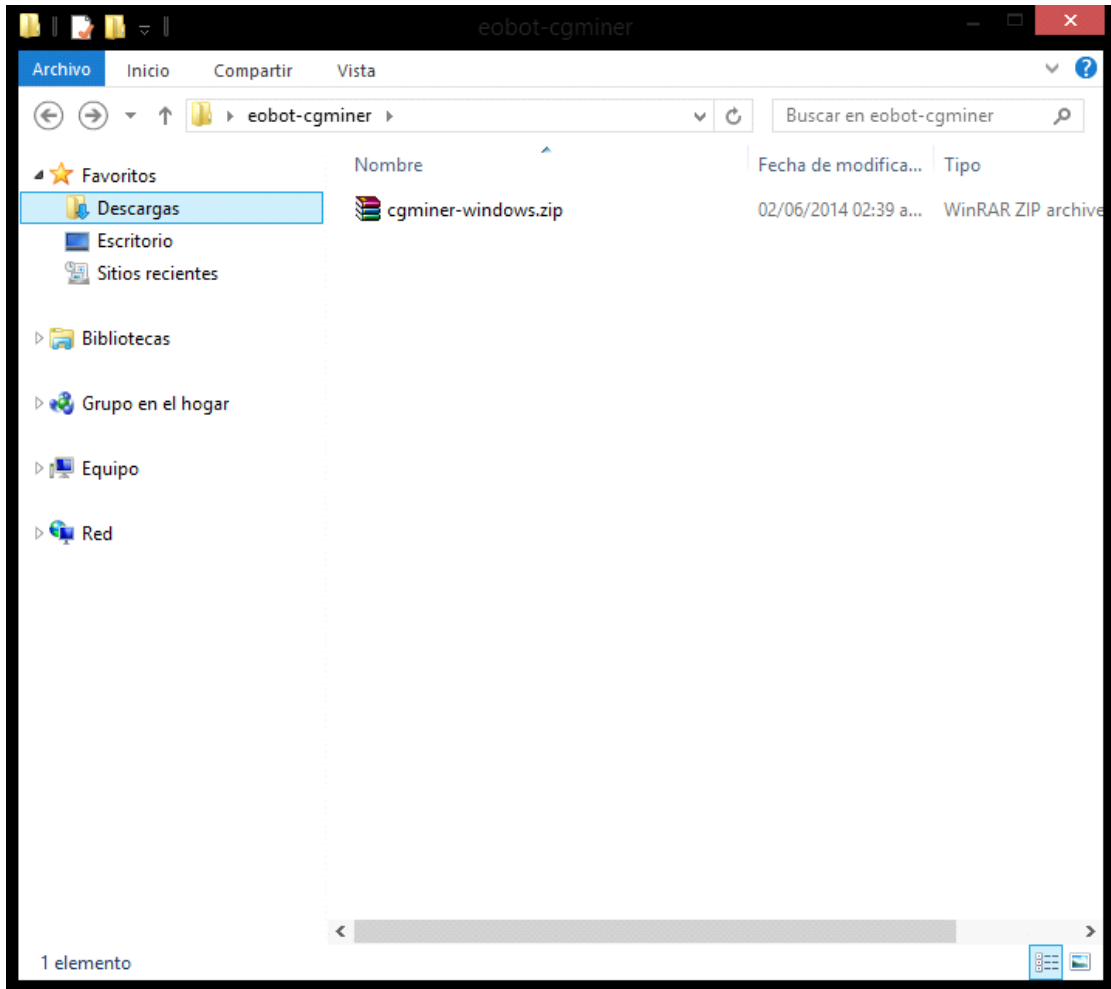
Your Unique Run Commands:

```
cgminer.exe --script -o stratum+tcp://192.99.18.63:3333 --userpass eobot_380:x  
miner.exe -a script -o stratum+tcp://192.99.18.63:3333 --userpass eobot_380:x
```

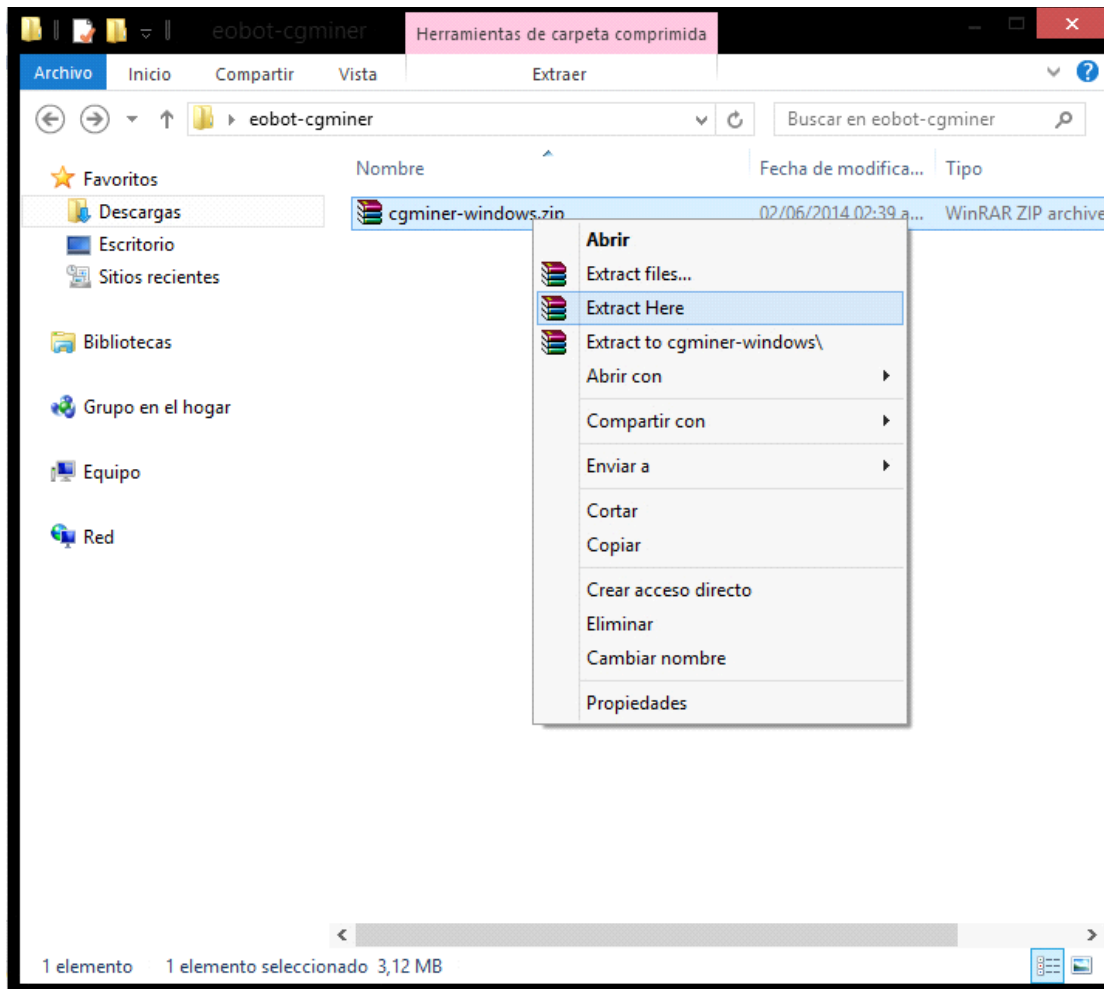
Important to increase speed: The default cgminer settings does not include hardware specific flags, which you may find here in the [Bitcoin Mining Hardware Comparison](#). Failing to use the proper flags can result in performance decreases in excess of 50%.

Download cgminer

Step Three:

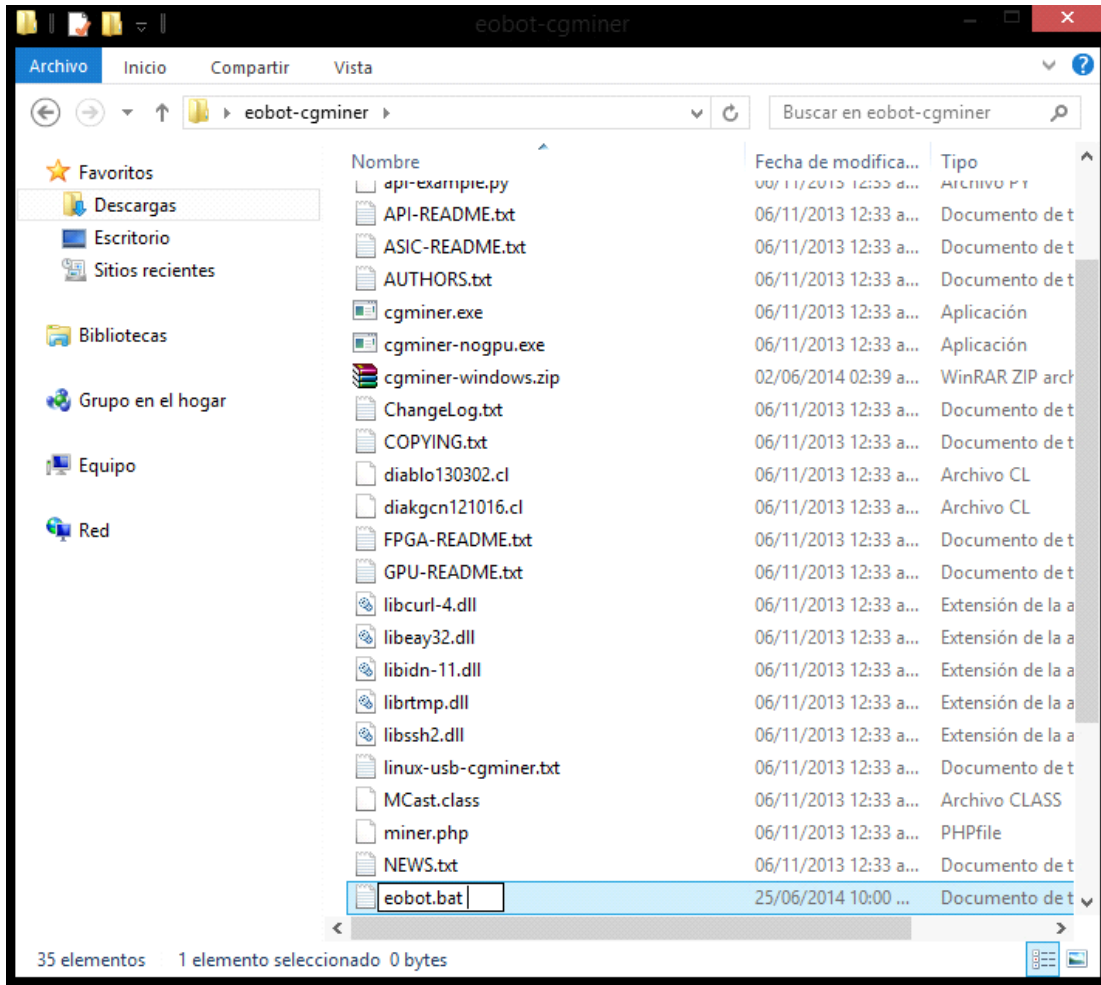


Save and extract in the same folder



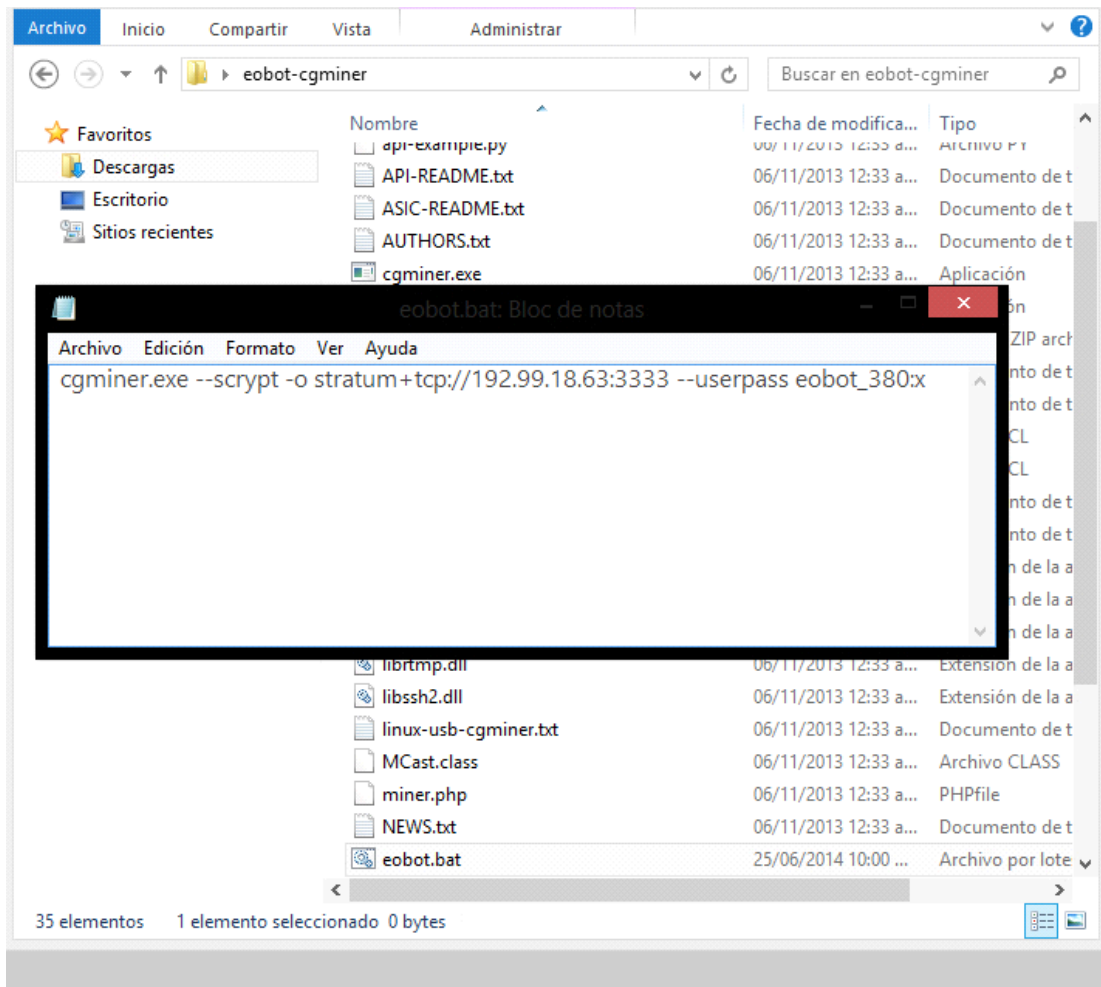
Step Four:

Create a new document text file and rename to eobot.bat



Step Five:

Edit the eobot.bat file and complete the empty file with the info who appears in the "pool info" (go to step two and read "Your unique run commands") then save file



Finish Step

Double click to "eobot.bat" file and wait.

```
C:\Windows\system32\cmd.exe
sgminer 4.2.1 - Started: [2014-06-25 18:51:38] - [0 days 03:13:58]
-----
(Ss):96.75K (avg):96.70Kh/s | A:16464 R:64 HM:0 MU:85.802/m
S1: 0 Ss: 7 MB: 384 LW: 18124 GF: 1 RF: 0
Connected to 192.99.18.63 (stratum) diff 16 as user eobot_380
Block: 1d900944... Diff:819M Started: [22:04:49] Best share: 5.24K
-----
[P]ool management [G]PU management [S]ettings [D]isplay options [Q]uit
CPU 0: 59.0C 100% | 96.24K/96.70Kh/s | R: 0.4% HM:0 MU:85.802/m I:13
-----
[21:59:13] Accepted 8948bf1c Diff: 25/16 GPU 0
[21:59:23] Accepted 020443e8 Diff: 126/16 GPU 0
[21:59:33] Accepted 07f64601 Diff: 32/16 GPU 0
[21:59:43] Accepted 022581bf Diff: 119/16 GPU 0
[22:00:19] Accepted 8e196484 Diff: 21/16 GPU 0
[22:00:39] Accepted 83a48ce6 Diff: 78/16 GPU 0
[22:00:59] Accepted 07f7d34c Diff: 32/16 GPU 0
[22:01:16] Accepted 0922e200 Diff: 28/16 GPU 0
[22:01:26] Accepted 8e55f146 Diff: 17/16 GPU 0
[22:01:46] Accepted 899ec9db Diff: 33/16 GPU 0
[22:01:54] Accepted 09abe693 Diff: 25/16 GPU 0
[22:02:04] Accepted 0eb08b35 Diff: 17/16 GPU 0
[22:02:14] Accepted 8be374d8 Diff: 21/16 GPU 0
[22:02:24] Accepted 04f4bf10 Diff: 51/16 GPU 0
[22:02:34] Accepted 0f74b677 Diff: 16/16 GPU 0
[22:02:44] Accepted 06301912 Diff: 21/16 GPU 0
[22:02:54] Accepted 89cf246b Diff: 26/16 GPU 0
[22:03:04] Accepted 0c54f4a4 Diff: 28/16 GPU 0
[22:03:14] Accepted 045de73f Diff: 58/16 GPU 0
[22:03:24] Accepted 065c6ala Diff: 40/16 GPU 0
[22:03:34] Accepted 8bfe8160 Diff: 21/16 GPU 0
[22:03:44] Accepted 0b8dadcd Diff: 23/16 GPU 0
[22:03:54] Accepted 0933957b Diff: 27/16 GPU 0
[22:04:04] 192.99.18.63 stale share detected, discarding
[22:04:14] Accepted 073a0c03 Diff: 35/16 GPU 0
```

... congrats.. you are mining now!